

German Based Ethiopian Relief Organization



# Women with disability rehabilitation project proposal

By Dr. Etsegenet T.

Jan 13,2023

Addis Ababa

# Background

- Urban low-income communities face immense challenges in accessing nutritious food. One of Africa's biggest cities and Ethiopia's capital, Addis Ababa, shares this struggle.
- **A fifth of its residents live** in poverty and now face high inflation and cost of living rates that make access to healthy food a daily challenge.

# Population growth forecast (CSA)

*Table 7.1: Projected Population (In '000s) Of Ethiopia by Variant and Urban Population,2007-37*

Year	Total population			Urban population	
	Medium	High	Low	Population	Percentage
2007	73,845	73,845	73,845	11,874	16.1
2012	83,742	84,040	82,974	15,246	18.2
2017	94,352	95,223	92,309	19,164	20.4
2022	105,166	106,983	101,490	23,880	22.8
2027	115,946	118,959	110,405	29,311	25.4
2032	126,514	130,875	119,074	35,488	28.2
2037	136,792	142,577	127,460	42,388	31.1

# Disability status

- Based on data from UNICEF's 2018 survey, it is estimated that **7.8 million people in Ethiopia are living with some form of disability**, which is approximately **9.3 percent** of the country's total population.
- People With Disabilities are the most neglected, abandoned, marginalized, and disadvantaged citizens, who have lost self esteem and respect as the result of dully recognized physical disability.
- Thus, empowering women with disability with agriculture related entrepreneurial and business planning skills to make them more independent and capable to participate in the local economy is a sure way of fighting the extreme poverty observed in the disabled women community.

## Objectives of this proposal

### **Provide skill training and capacity building to support disadvantaged, marginalized and forgotten disabled women in Lemi-kura sub –city**

- Provide training for **60 women with disability (WDs) or women with a disabled child** in poultry rearing in three phases
- Provide materials, technical and psycho-social support, to enable trainees engaged in self-supporting income generating activities;
- Provide start up capital for the business
- Create market linkages for poultry products (egg, chicken, etc)
- Promote disability inclusive development through awareness raising.

## Proposal concept summery

- 1) **Provision of inputs and trainings** – smart cages , 45 days *Sasso* breed female pullets , provide feed until they start laying eggs
- 2) **Creating market access and links** – women's saving groups, peer discussion groups , linking to nearby hotels, supermarkets, caterings
- 3) **Expanding the business** – to pullet producers , other businesses

# Cyle of the activity

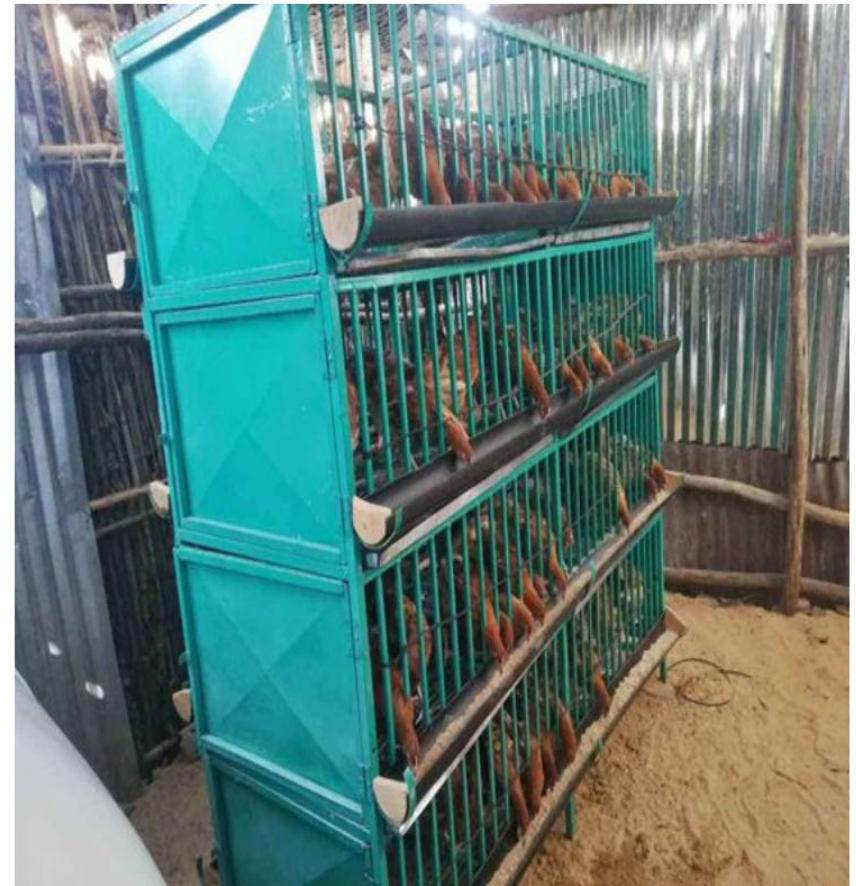
- The whole process takes two years for a given HH to be come self-sufficient

45 days dual purpose chicken--> laying hens (1.5yrs) -->

changing feed to gain wait and sell for meat -->

get other pullets by themselves-----> continues the cycle

# Smart cages that can carry up to 160 chickens

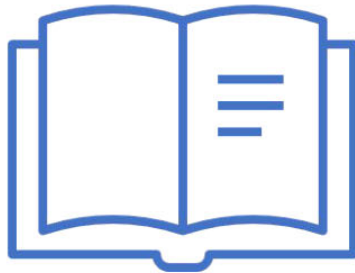




# Advantage /why women with disability/

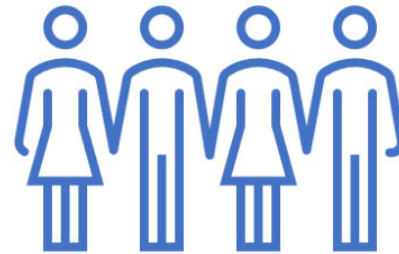
- Requires minimum mobility
- Climate smart businesses
- urban agriculture era
- High protein demanded due to expanding urban middle class popn.
- Easy market access and links (both product and by products)
- Can be expanded easily
- Consider forgotten/or excluded community -thus high govt support
- Gender sensitive
- Disability inclusion
- Income generating + food security at HH level
- Developmental project

# Business model



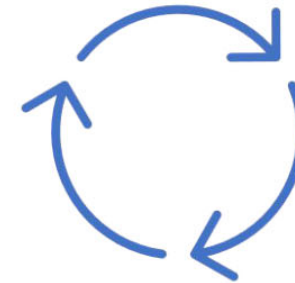
## **Trainings and stakeholders meeting**

- enturpruener skill
- Poultry production skill
- Psycoicla support



## **Women engaging in Income generating activity (IGA)**

Provision of initial capital,  
follow up of implentation



## **Income generation**

- linking women to food markets
- encourage savings
- keeping the cycle going on its own as an exit strategy

Outcome = Self sufficient women/HHs

# Project implementation phases

Jan-June 2024	July -Dec 2024	Jan -June 2025	July -xxx 2025
<p><b>Project launch</b></p> <ul style="list-style-type: none"><li>- 20 women enrolled</li><li>- 1/3 of the budget required</li><li>- most of the lobbying and MoU signing with govt done</li></ul>	<ul style="list-style-type: none"><li>- 20 women enrolled</li><li>- 1/3 of the budget required</li></ul>	<ul style="list-style-type: none"><li>- 20 women enrolled – 1/3 of the budget required</li></ul>	<p>Project outcome evaluation, audit ,closeup</p>

# Activity and budget

- The over all project activity during the 18 months implementation time is 8.8 million ETB or ----- Euro

# Risk assessment matrix

Risk	Likely hood (low, ,medium, high)	Impact (Fatal, Serious, manageable)	Mitigation strategy
<b>Cost of inputs raising</b>	High	Serious	Looking for cost effective ways, early implementation , reducing the beneficiary number, looking further sponsorship
<b>High expectation of beneficiaries</b>	High	Manageable	Creating awareness and providing psychosocial support on dependency syndrome
<b>Disease outbreaks</b>	High	Fatal	Introducing biosecurity measures, vaccinations
<b>Beneficiaries dropout</b>	Medium	Manageable	Creating strong women’s saving group and competitive incentives
<b>Scarcity of space for the activity</b>	High	Manageable	Apply serious selection criteria of beneficiaries , asking the municipality for land /space
<b>Government employes abusing the quota</b>	Medium	Serious	Creating a clear and measurable goals , cross-checking beneficiaries background for any relation , medical certification
<b>Unavailability of fund</b>	Low	Fatal	Trying different grants

*Thank you.*